

What are the impacts of the Early Childhood Crisis Locally?



Early Childhood
Education
Action Committee
One community for our future

93 closed
classrooms

156 unfilled
positions

1014 additional children could
be served if those programs
were fully staffed

Among the 38 Lehigh and Northampton County providers that responded to the Start Strong PA September 2023 survey

What local groups are collaborating on addressing this issue?

The Early Childhood Education Action Committee is a group of committed partners representing early childhood advocates, providers, stakeholders, businesses, and community members that are working together to make impact in advancing the early childhood sector across the Lehigh Valley. The Committee's goals include the following:

- **Children & Families** – Create affordable, accessible childcare opportunities for all.
- **Workforce** – Support career pathways to Early Childhood Education and improve conditions for current early childhood workforce.
- **Childcare Providers** – Provide resources, connections and support to build and strengthen capacity.
- **Community** – Engage, increase awareness, and mobilize around important childcare issues.

To find out more information about the Early Childhood Education Action Committee, visit www.lvcfoundation.org.

What action can I take today?



Business owners can partner with local childcare providers to provide childcare options for their workers. Find out more information at www.pakeys.org/



Policy makers can advocate for increased compensation for childcare teachers and fund career pathways for individuals in the early care and education field.



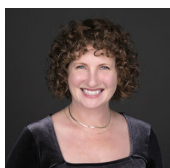
Individuals can be informed about candidates' positions on childcare issues, be a philanthropic partner with childcare providers, and stay informed about collective action of the Early Childhood Education Action Committee.

Follow the StartStrong PA Campaign here to learn more about statewide advocacy efforts and share your early childhood story. www.startstrongpa.org

To learn about political candidates' positions on early childcare, visit <https://childrenfirstactionfund.org/child-care-voter/>



**START
STRONG
PA**



Learn more about the Lehigh Valley Community Foundation efforts to address the early childhood crisis

Megan Briggs, Vice President of Community Investments
Lehigh Valley Community Foundation
840 West Hamilton Street, Suite 310, Allentown, PA 18101
610 351-5353 Ext. 21 | megan@lvcfoundation.org

LEHIGH VALLEY
Community Foundation
CONNECT. GROW. FUND.